

# 2018

PARTS CATALOG



  
*Specialty Enterprises*  


## Parts Orders & Customer Service:

---

Congratulations on your purchase of a Millennium Boom Product!

Customer satisfaction is our goal, so please contact us if you have any questions or needs with your recent purchase. As always, we stand by our work and impeccable service. Please look to us, Specialty Enterprises, to become the company you rely on for all of your spray boom needs.



## How to Order:

---

Parts orders can be placed by phone Monday - Friday 8:00am - 5:00pm Central. Please call (920) 787-7010 to speak with someone in our parts department.

You can also email your parts orders to: [parts@spraybooms.com](mailto:parts@spraybooms.com)

## Sales & Support Contact Info:

---

Customer satisfaction has always been our top priority, so please feel free to contact us if you have any questions or needs related to your Millennium spray booms. You can also find answers to commonly asked questions on our [website's FAQ](#), as well as forms you can use to contact our various departments, just visit <http://spraybooms.com>

### Parts Sales

(920) 787-7010

[parts@spraybooms.com](mailto:parts@spraybooms.com)

### Boom Sales

(920) 787-7010

[sales@spraybooms.com](mailto:sales@spraybooms.com)

### Field Service & Support

(920) 240-5218

[support@spraybooms.com](mailto:support@spraybooms.com)

### Specialty Enterprises, LLC - Main Office

PO Box 368

123 Pickle Row

Wautoma, WI 54982

**Phone:** (920) 787-7010

**Fax:** (920) 787-7030

**Email:** [info@spraybooms.com](mailto:info@spraybooms.com)

### Business hours:

M-Th: 8:00am - 5:00pm

Fri: 8:00am - 4:00pm



# Table of Contents

## **Part I: Primary Section**

<i>Primary assembly</i> .....	1
-------------------------------	---

## **Part II: Secondary Section**

<i>Secondary assembly</i> .....	2
<i>Hinge ears</i> .....	3
<i>Hinge end</i> .....	4
<i>Pivot &amp; stop block</i> .....	5
<i>Hinge bracket</i> .....	6
<i>Breakaway end</i> .....	7

## **Part III: Breakaway Section**

<i>Breakaway assembly</i> .....	8
<i>Breakaway damper</i> .....	9

## **Part IV: Accessories**

<i>Boom cradles</i> .....	10
<i>Lift lug ears</i> .....	11
<i>Bump stop kit</i> .....	11
<i>Shock cord</i> .....	11
<i>Hog ring</i> .....	11
<i>Attachment brackets</i> .....	12
<i>Pin assembly &amp; ring</i> .....	12
<i>Shelf mounting bracket</i> .....	13
<i>Secondary shelf bracket</i> .....	13
<i>Hinge box assembly</i> .....	14
<i>Hydraulic cylinder</i> .....	14
<i>Fold cylinder pin</i> .....	14
<i>Plumbing tab</i> .....	14
<i>Cylinder anchor bracket</i> .....	15
<i>Hinge shim</i> .....	15
<i>Pivot fork</i> .....	15
<i>Lift lug spacer</i> .....	16
<i>Lift lug attachment bracket</i> .....	16
<i>Primary to Secondary linkage</i> .....	16
<i>Breakaway bump stop</i> .....	17
<i>Square washer</i> .....	17
<i>Breakaway rubber bumper</i> .....	17
<i>1/4" hydraulic line</i> .....	17
<i>Fold cylinder hydraulics</i> .....	18

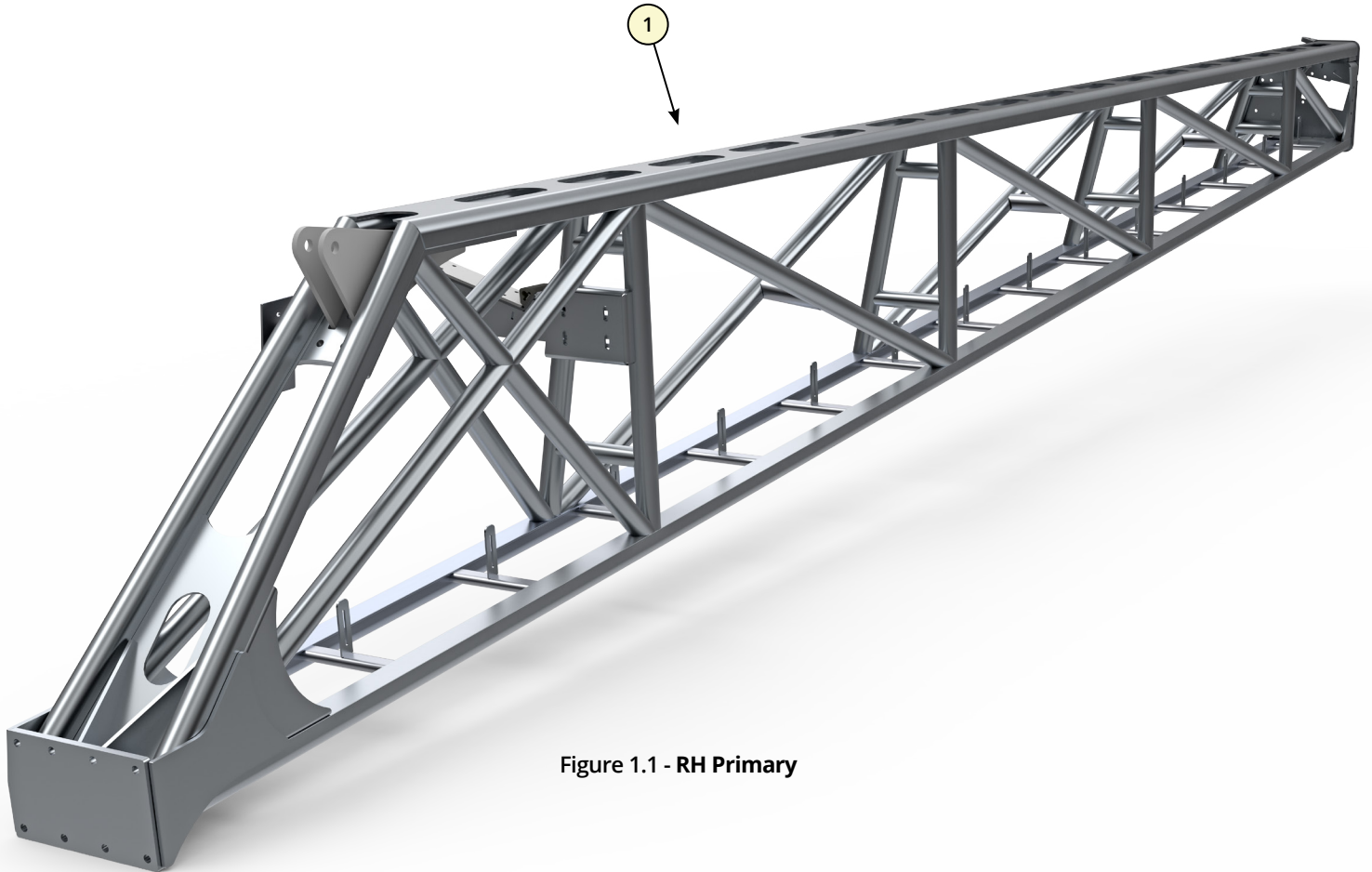


Figure 1.1 - RH Primary

Ref #	Part #	Description	Qty
1	ACP0378430	PRIMARY RH, 66-120	1
NOT SHOWN	ACP0378430	PRIMARY RH, 66-132	1
NOT SHOWN	ACP0378470	PRIMARY LH, 66-120	1
NOT SHOWN	ACP0378470	PRIMARY LH, 66-132	1

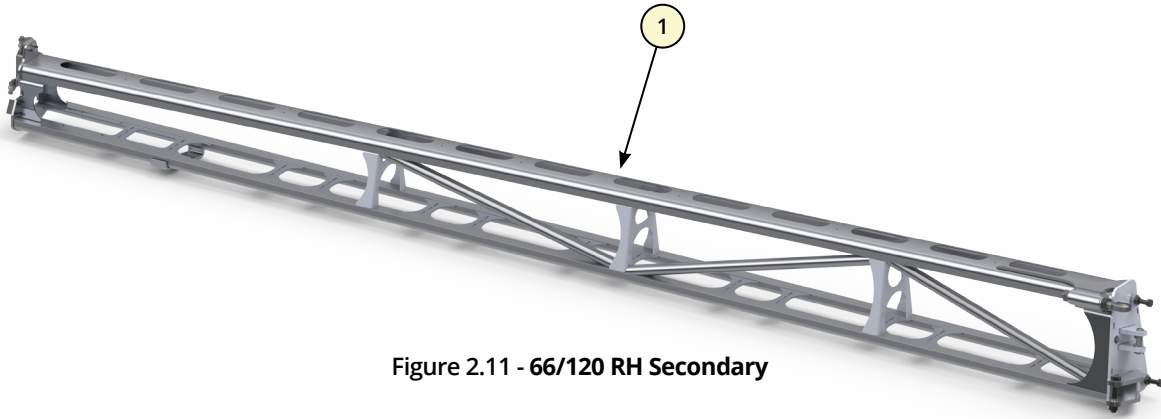


Figure 2.11 - 66/120 RH Secondary

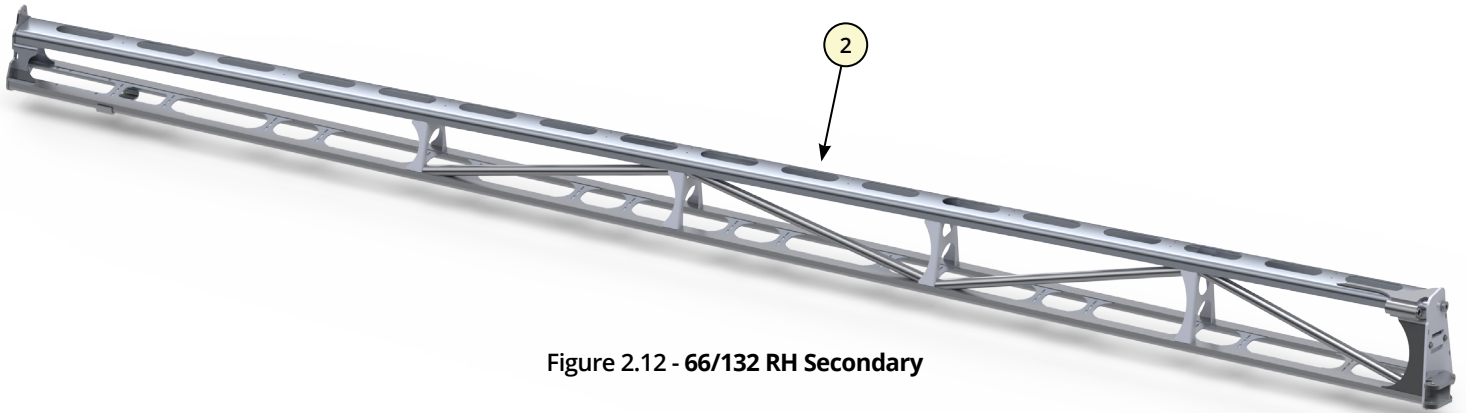


Figure 2.12 - 66/132 RH Secondary

Ref #	Part #	Description	Qty
1	ACP0378350	66/120 RH SECONDARY	1
NOT SHOWN	ACP0378690	66/120 LH SECONDARY	1
2	ACP0378700	66/132 RH SECONDARY	1
NOT SHOWN	ACP0378710	66/132 LH SECONDARY	1

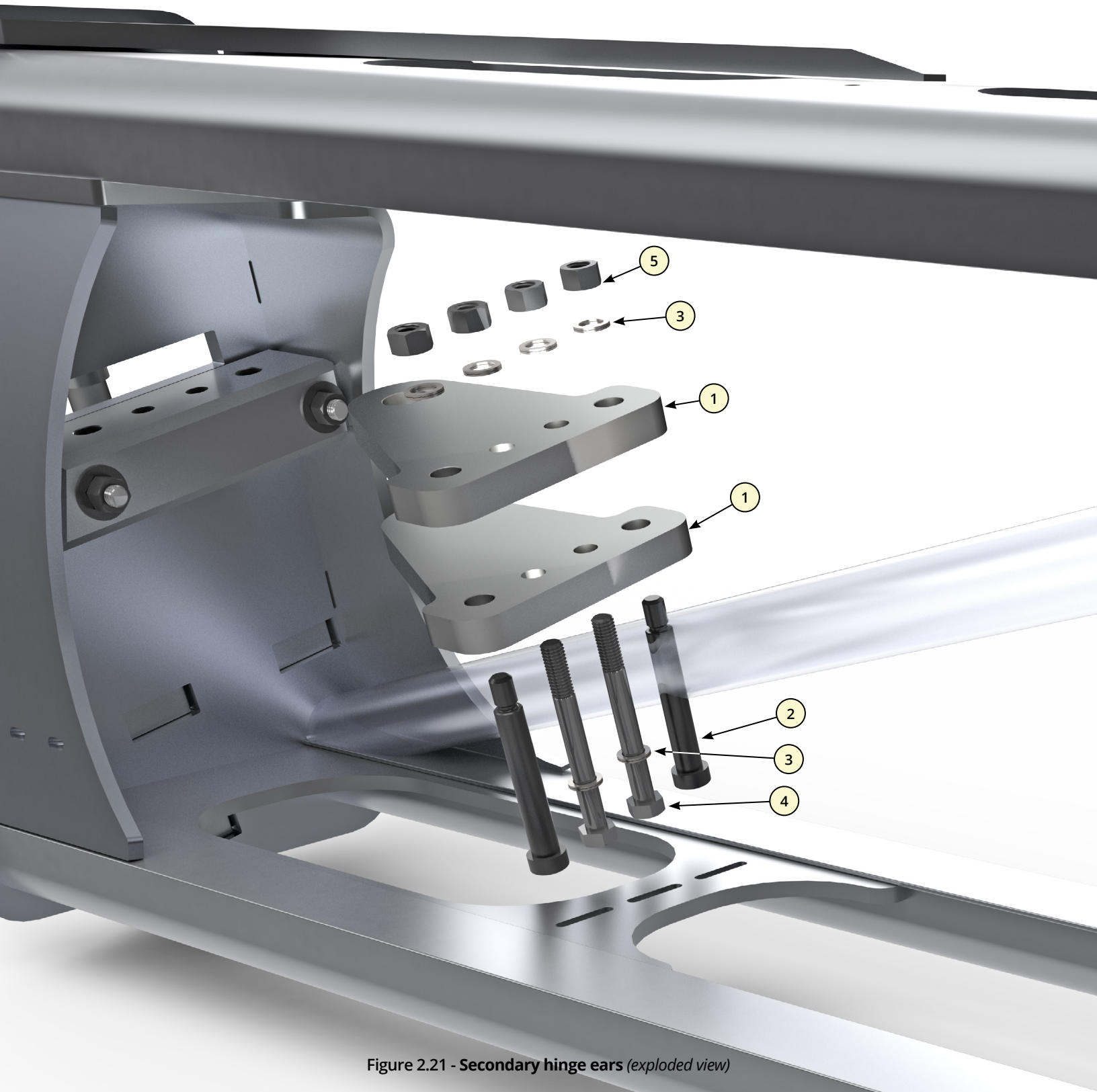


Figure 2.21 - Secondary hinge ears (exploded view)

Ref #	Part #	Description	Qty
1	ACP0378560	PLATE, CYL MOUNT	2
2	ACP0380430	SHCS .62 X 3.50 X .50 - 13	2
3	ACP0380670	WASHER, NORD-LOCK 1/2	6
4	ACP0380500	CAPSCREW .50 - 13 X 4.50 G8	2
5	ACP0380640	HEX NUT 1/2-13 G8	4

## 2.3 - SECONDARY SECTION

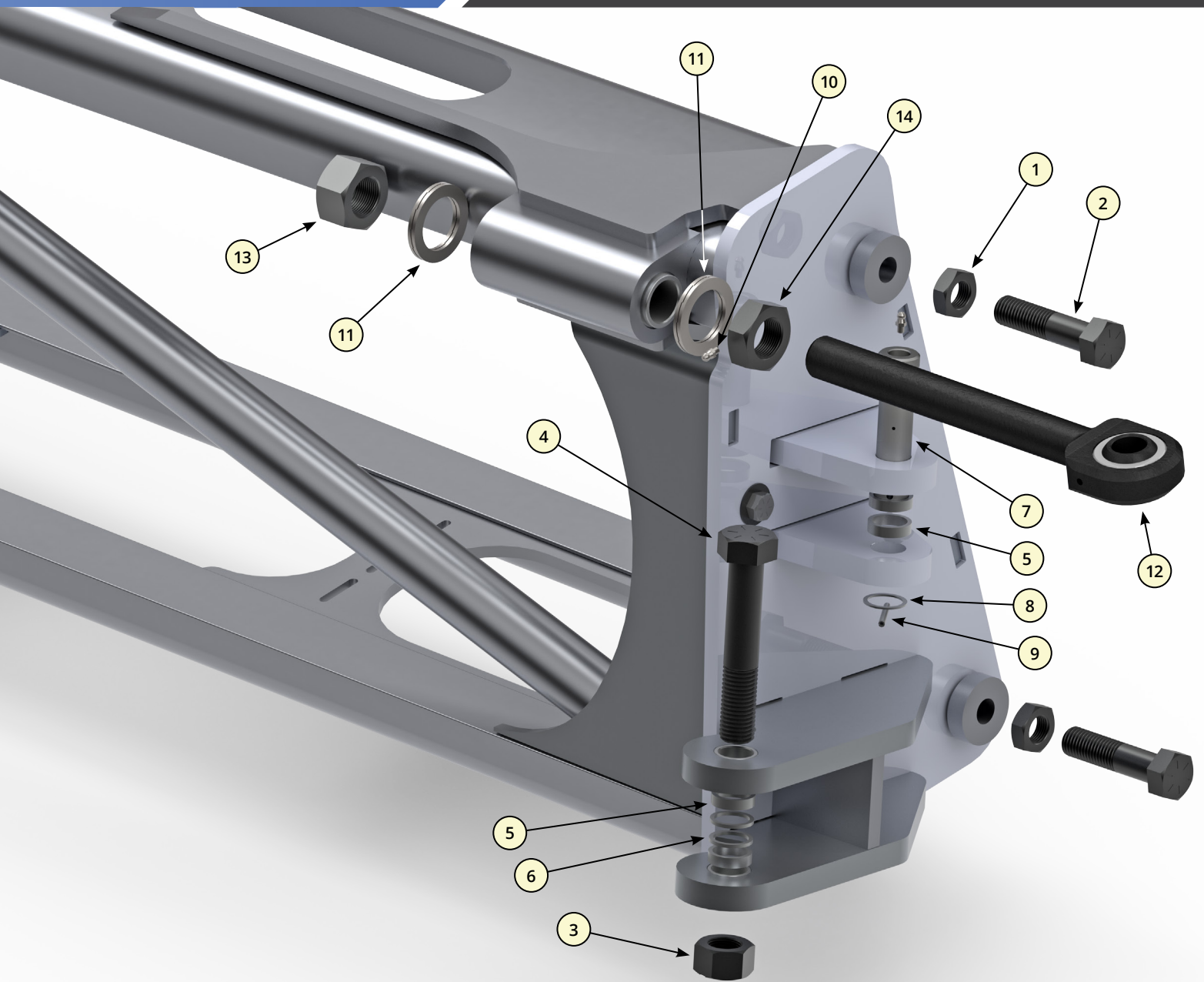


Figure 2.31 - Secondary hinge end (exploded view)

Ref #	Part #	Description	Qty
1	ACP0380620	JAM NUT 7/8-9	2
2	ACP0380750	CAPSCREW .88-9 X 3.50 G8	2
3	ACP0380560	TOP LOCK NUT 1.0-8	1
4	ACP0380760	CAPSCREW 1.00-8 X 5.50 G8	1
5	ACP0380870	WASHER, 1.25 X 1.01 X .309	4
6	ACP0380850	WASHER, 1.25 X 1.01 X .103	2
7	ACP0378490	PIN, CYLINDER LINKAGE	1
8	ACP0380880	WASHER, 1.25 X 1.01 X .052	1
9	ACP0380390	SPRING PIN .19 X 1.62 SS	1
10	ACP0380420	FITTING, GREASE ST 1/4-28	2
11	ACP0380690	WASHER, NORD-LOCK 1.50	2
12	ACP0378770	ROD END, HINGE RH	1
13	ACP0380840	HEX NUT 1.25-12 UNF-2B G8	1
14	ACP0380820	JAM NUT 1.25-12 UNF-2B	1

## 2.4 - SECONDARY SECTION

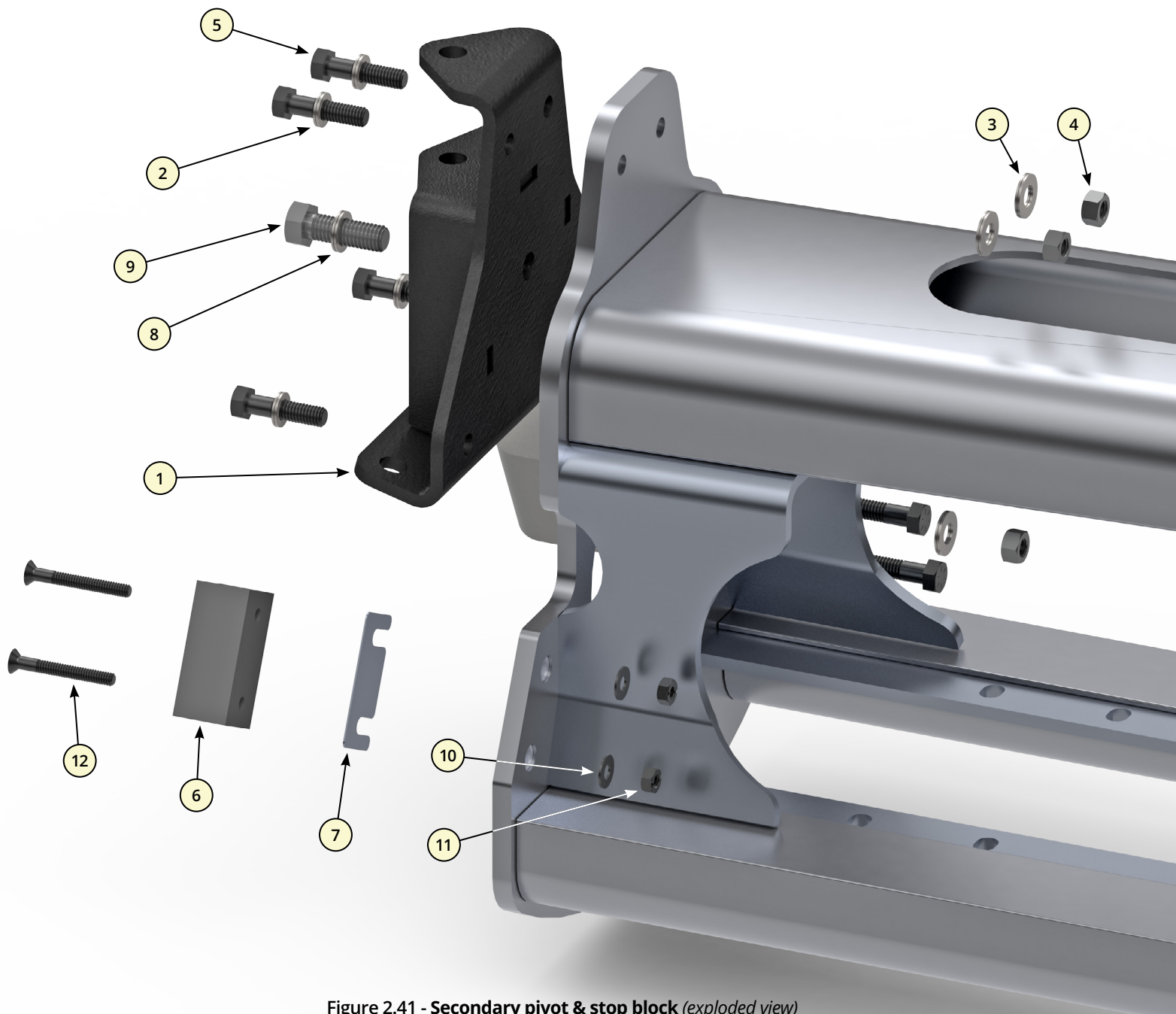


Figure 2.41 - Secondary pivot & stop block (exploded view)

Ref #	Part #	Description	Qty
1	ACP0378750	SCNDRY HINGE BRKT ASSY	1
2	ACP0380660	WASHER, NORD-LOCK 3/8	4
3	ACP0380700	WASHER, NORD-LOCK 3/8SP	6
4	ACP0380630	HEX NUT 3/8-16 G8	4
5	ACP0380460	CAPSCREW .38-16 X 1.50 G8	6
6	ACP0378580	BLOCK, STOP	1
7	ACP0378620	SHIM, STOP BLOCK	1
8	ACP0380670	WASHER, NORD-LOCK 1/2	1
9	ACP0380470	CAPSCREW .50-13 X 1.50 G8	1
10	ACP0380570	WASHER, PLAIN 1/4	2
11	ACP0380530	TOP LOCK NUT 1/4-20	2
12	ACP0380740	FHTMS .25-20 X 2.00	2



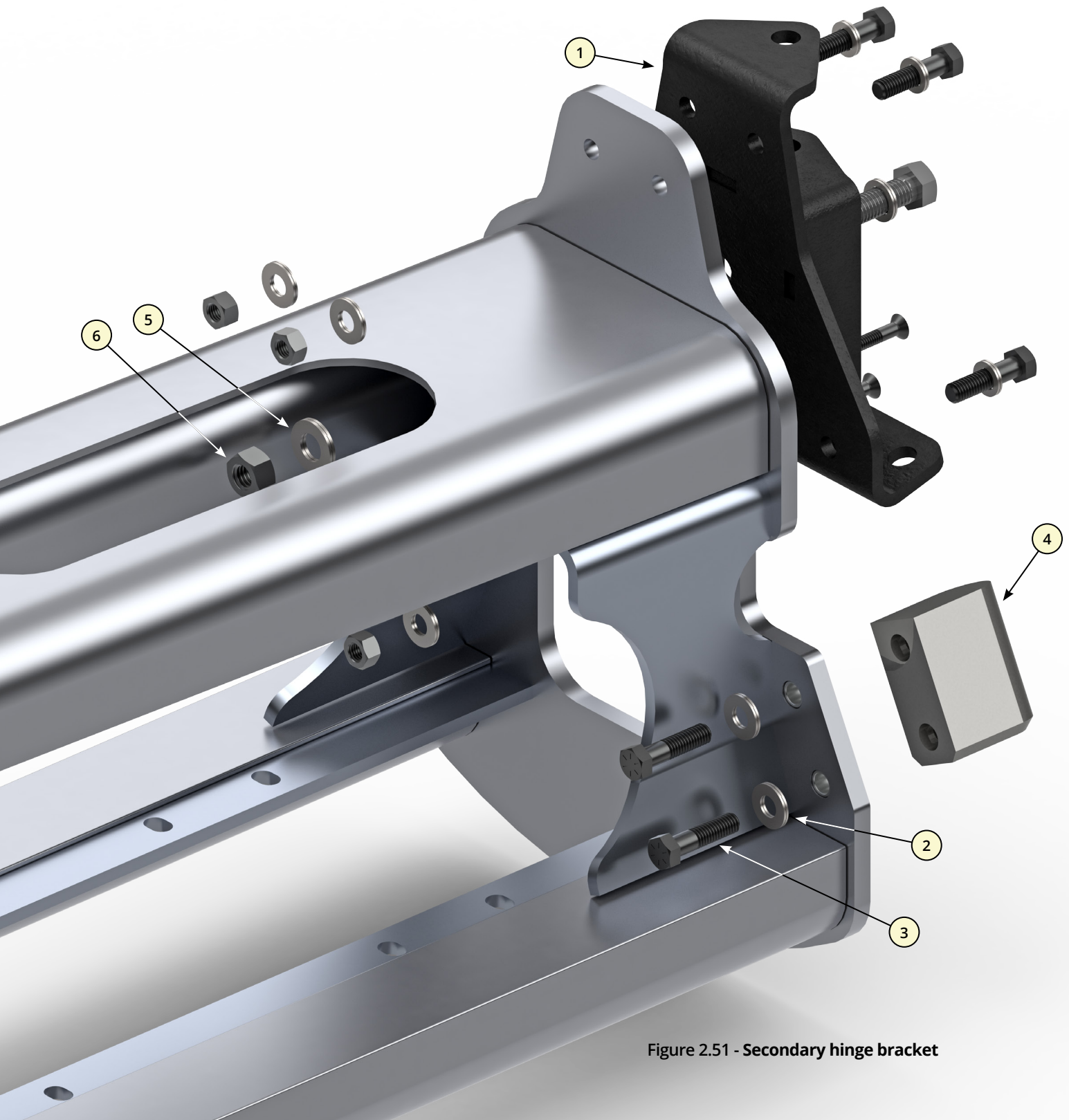


Figure 2.51 - Secondary hinge bracket

Ref #	Part #	Description	Qty
1	ACP0378750	SCNDRY HINGE BRKT ASSY	1
2	ACP0380700	WASHER, NORD-LOCK 3/8SP	6
3	ACP0380460	CAPSCREW .38-16 X 1.50 G8	6
4	ACP0378570	BLOCK, LWR PIVOT MTG	1
5	ACP0380710	WASHER, NORD-LOCK 1/2SP	1
6	ACP0380640	HEX NUT 1/2-13 G8	1

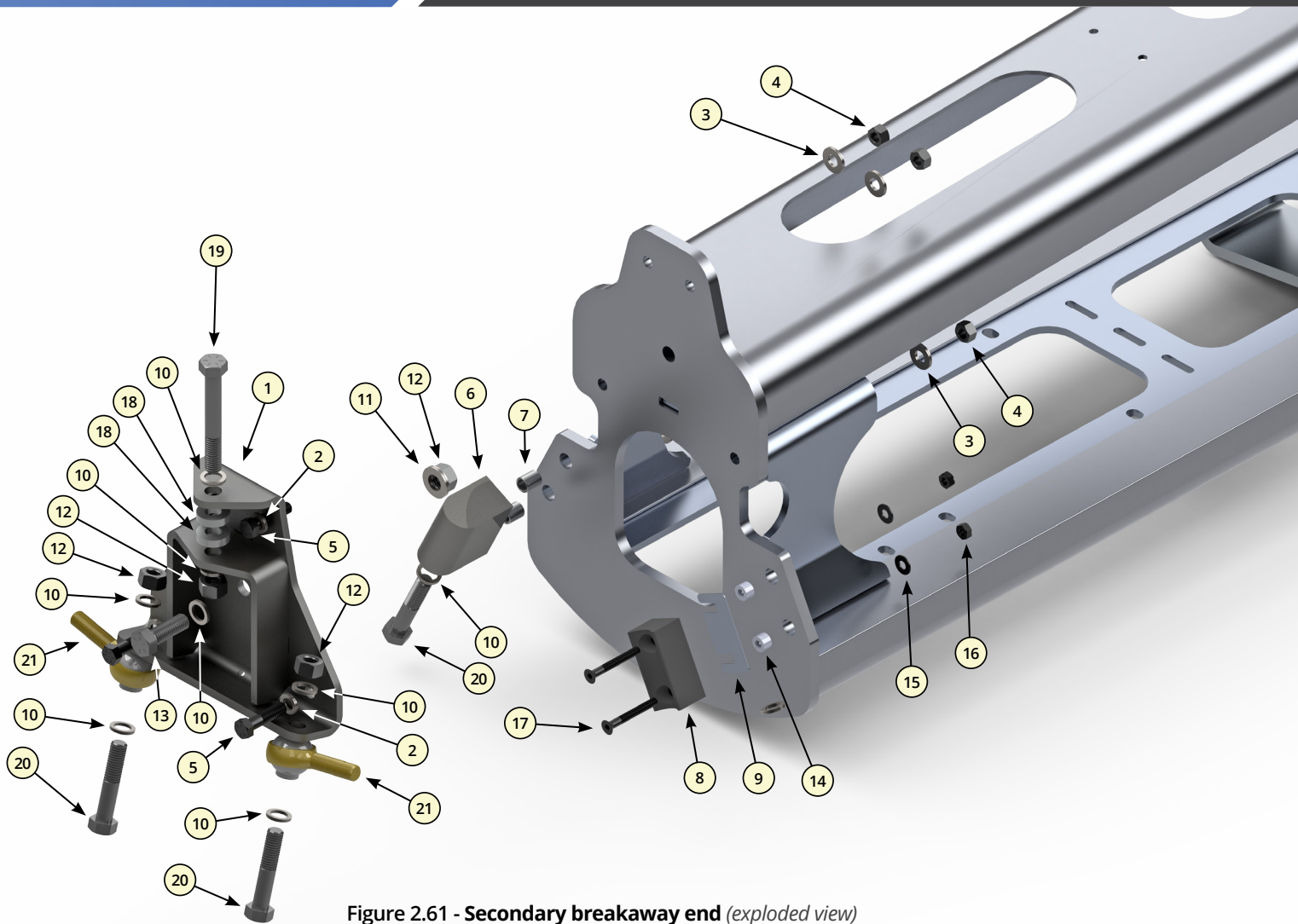


Figure 2.61 - Secondary breakaway end (exploded view)

Ref #	Part #	Description	Qty
1	ACP0378750	SCNDRY HINGE BRKT ASSY	1
2	ACP0380660	WASHER, NORD-LOCK 3/8	4
3	ACP0380700	WASHER, NORD-LOCK 3/8SP	6
4	ACP0380630	HEX NUT 3/8-16 G8	4
5	ACP0380460	CAPSCREW .38-16 X 1.50 G8	6
6	ACP0378570	BLOCK, LWR PIVOT MTG	1
7	ACP0378590	DOWEL, ALIGNMENT	2
8	ACP0378580	BLOCK, STOP	1
9	ACP0378620	SHIM, STOP BLOCK	1
10	ACP0380670	WASHER, NORD-LOCK 1/2	9
11	ACP0380710	WASHER, NORD-LOCK 1/2SP	1
12	ACP0380640	HEX NUT 1/2-13 G8	4
13	ACP0380470	CAPSCREW .50-13 X 1.50 G8	1
14	ACP0380410	SPACER, .50 X .25 X .31 NY	2
15	ACP0380570	WASHER, PLAIN 1/4	2
16	ACP0380530	TOP LOCK NUT 1/4-20	2
17	ACP0380740	FHTMS .25-20 X 2.00	2
18	ACP0380400	SPACER, 1.00 OD X .50 ID X .25	2
19	ACP0380490	CAPSCREW .50-13 X 3.50 G8	1
20	ACP0380480	CAPSCREW .50-13 X 2.50 G8	3
21	ACP0378610	ROD END, LWR BALL JOINT	2

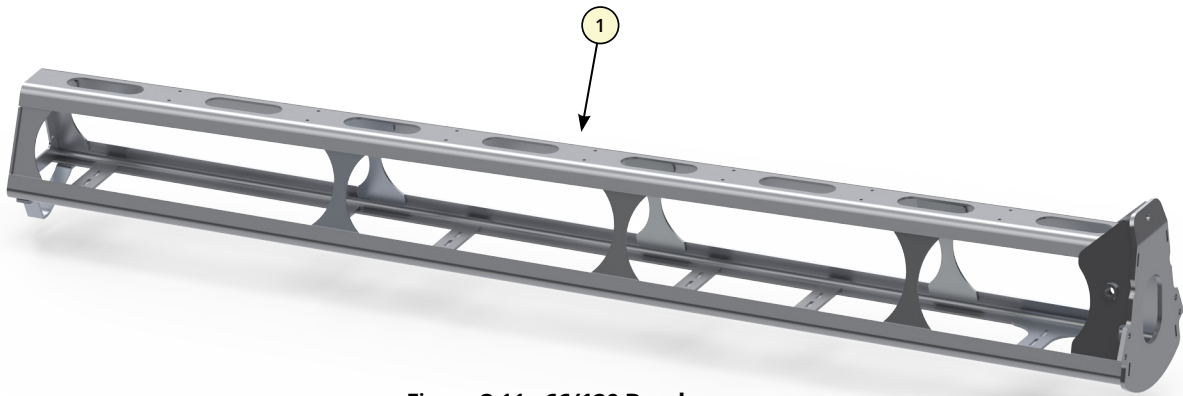


Figure 3.11 - 66/120 Breakaway

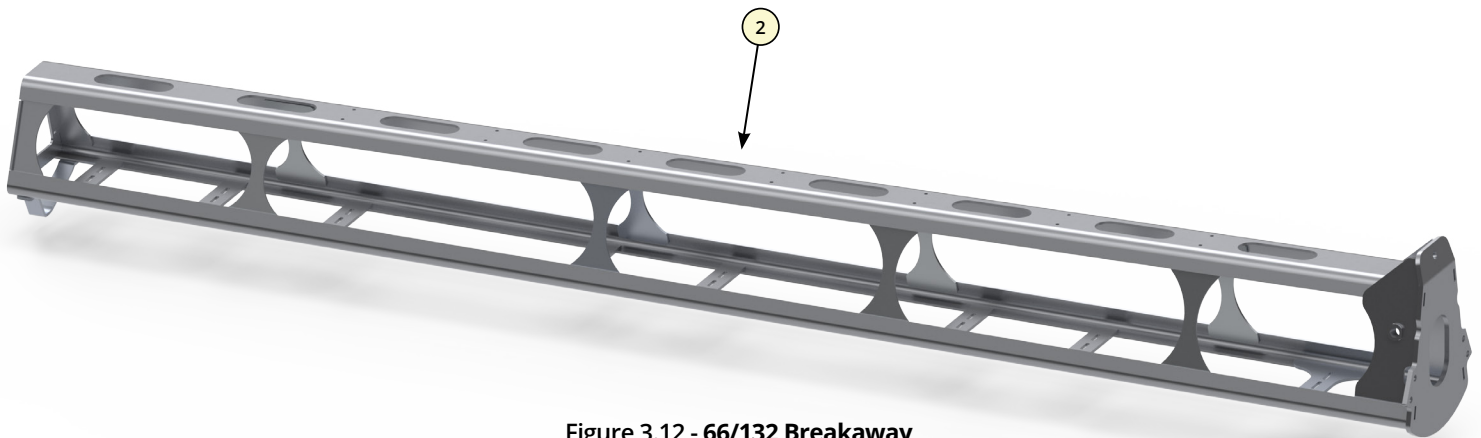


Figure 3.12 - 66/132 Breakaway

Ref #	Part #	Description	Qty
1	ACP0378840	66/120 BREAKAWAY	1
2	ACP0378850	66/132 BREAKAWAY	1

## 3.2 - BREAKAWAY SECTION

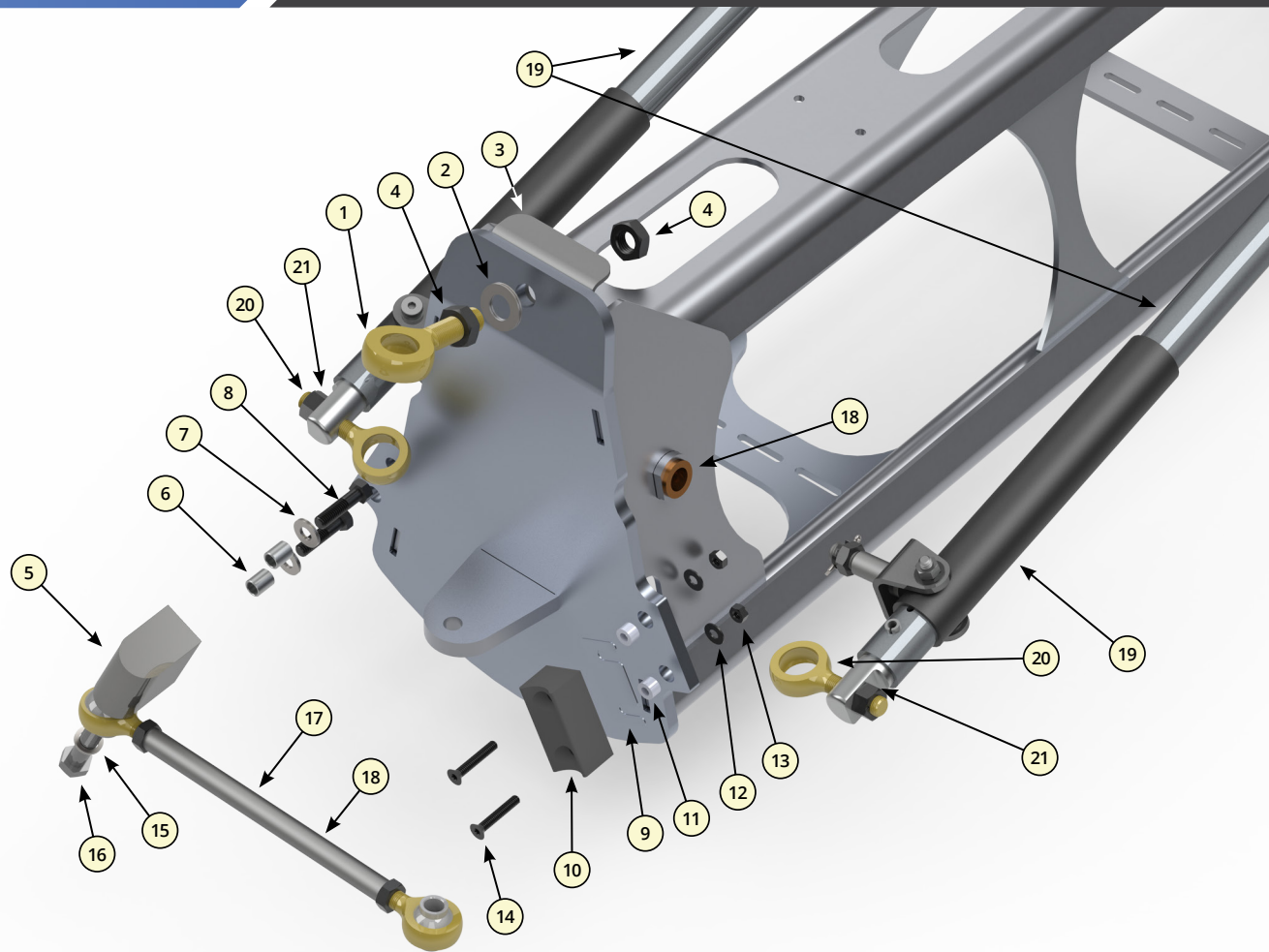


Figure 3.21 - Breakaway damper (exploded view)

Ref #	Part #	Description	Qty
1	ACP0378600	ROD END, UPPER BALL JOINT	1
2	ACP0380720	WASHER, NORD-LOCK 5/8SP	1
3	ACP0378760	BRACKET, PIVOT SPRT	1
4	ACP0380810	JAM NUT 5/8-18 UNF-2B	2
5	ACP0378570	BLOCK, LWR PIVOT MTG	1
6	ACP0378590	DOWEL, ALIGNMENT	2
7	ACP0380700	WASHER, NORD-LOCK 3/8SP	2
8	ACP0380460	CAPSCREW .38-16 X 1.50 G8	2
9	ACP0378620	SHIM, STOP BLOCK	1
10	ACP0378580	BLOCK, STOP	1
11	ACP0380410	SPACER, .50 X .25 X .31 NY	2
12	ACP0380570	WASHER, PLAIN 1/4	2
13	ACP0380530	TOP LOCK NUT 1/4-20	2
14	ACP0380730	FHTMS .25-20 X 1.50	2
15	ACP0380670	WASHER, NORD-LOCK 1/2	1
16	ACP0380480	CAPSCREW .50-13 X 2.50 G8	1
17	ACP0378660	LINK ASSY, HINGE	1
18	ACP0378670	LINK TUBE	1
19	ACP0378680	BEARING, FLANGED SLEEVE	4
20	ACP0378810	DAMPER ASSY	2
21	ACP0378610	ROD END, LWR BALL JOINT	2
22	ACP0380830	TOP LOCK NUT 1/2-20 UNF-2B	2



Figure 4.12 - AGCO RH boom cradle (bottom view)

Figure 4.11 - AGCO LH boom cradle (top view)

Ref #	Part #	Description	Qty
1	ACP0378790	LH BOOM CRADLE	1
2	ACP0378800	RH BOOM CRADLE	1

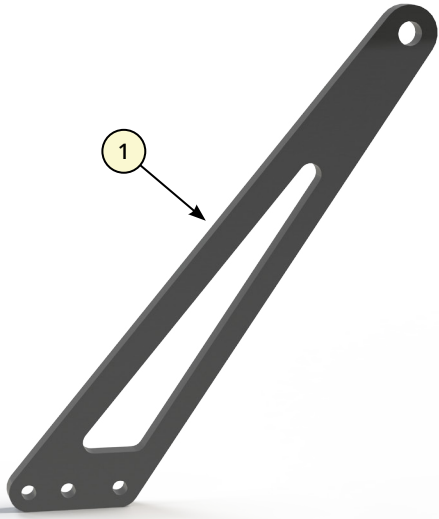


Figure 4.21 - Lift Lug Ear

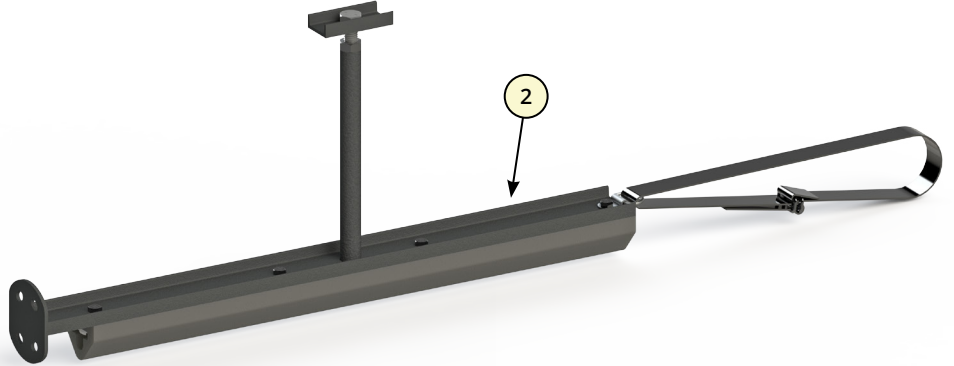


Figure 4.22 - Bump Stop Kit



Figure 4.23 - Shock Cord

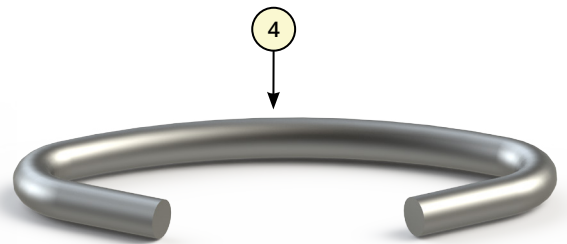


Figure 4.24 - Hog Ring (enlarged)

Ref #	Part #	Description	Qty
1	ACP0378650	LIFT LUG EAR	1
2	ACP0378860	BUMP STOP KIT	1
3	ACP0378830	SHOCK CORD	1
4	ACP0378820	HOG RING	1

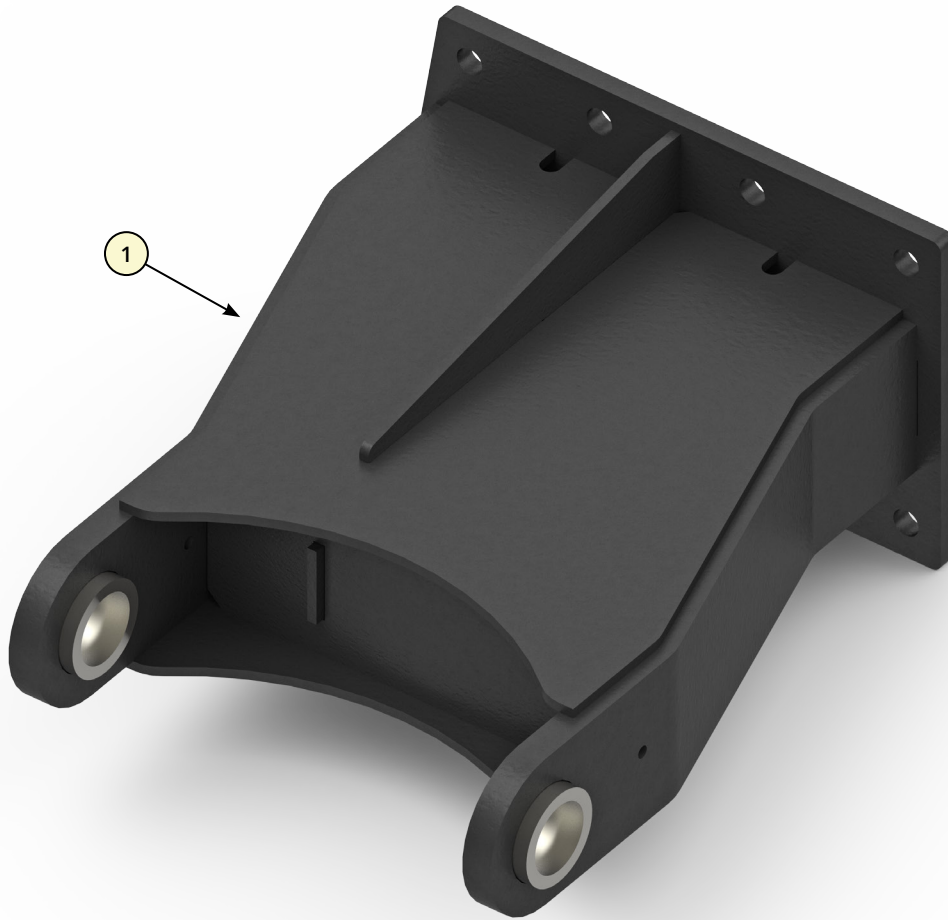


Figure 4.31 - RH AGCO attachment bracket

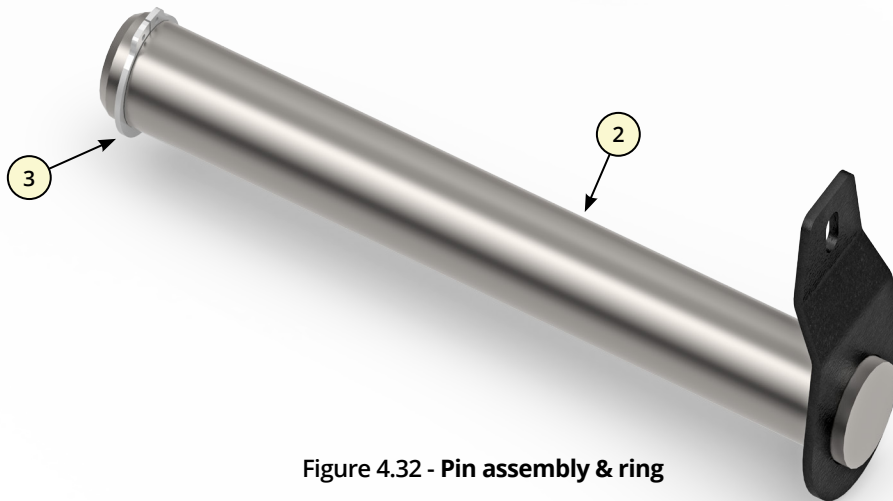


Figure 4.32 - Pin assembly & ring

Ref #	Part #	Description	Qty
NOT SHOWN	ACP0378630	LH ATTACHMENT BRACKET	1
1	ACP0378640	RH ATTACHMENT BRACKET	1
2	ACP0378720	PIN ASSY	1
3	ACP0378730	PIN RING	1

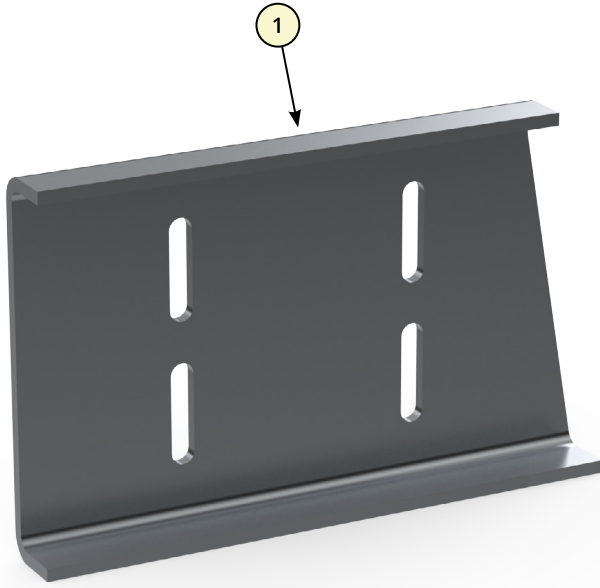


Figure 4.41 - LH Shelf Mounting Bracket

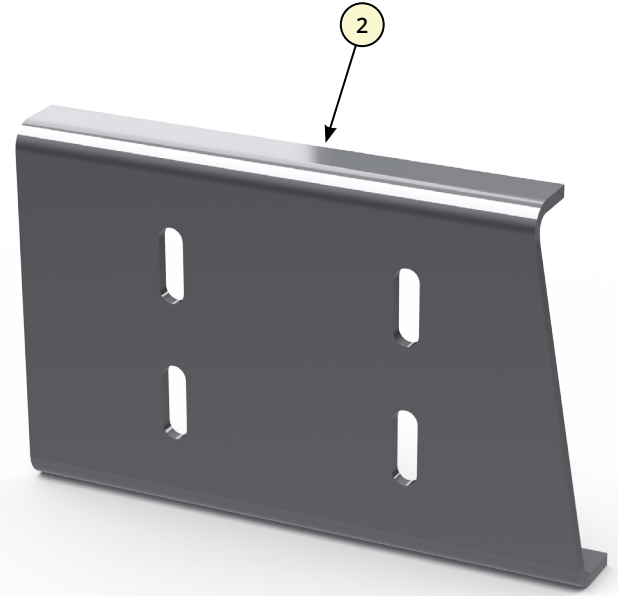


Figure 4.42 - RH Shelf Mounting Bracket

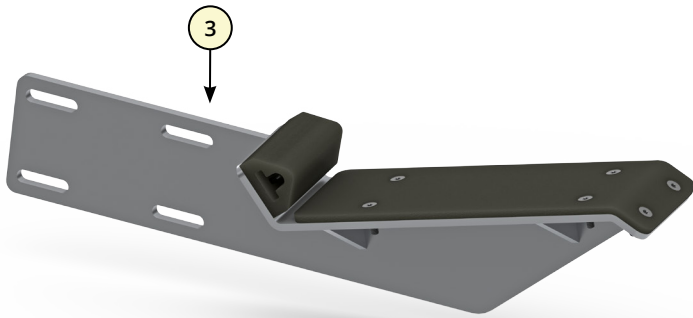


Figure 4.43 - LH Secondary Shelf Bracket

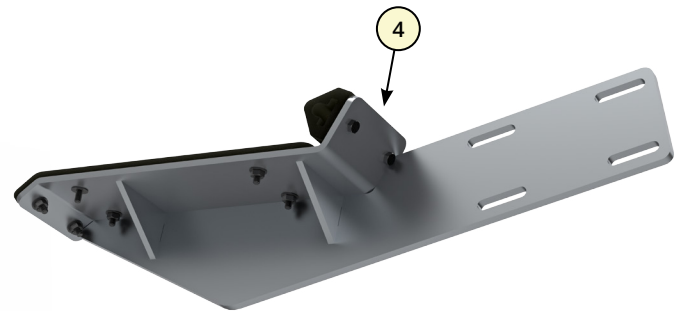


Figure 4.44 - RH Secondary Shelf Bracket (bottom view)

Ref #	Part #	Description	Qty
1	ACP0378360	LH SHELF MOUNTING BRACKET	1
2	ACP0378460	RH SHELF MOUNTING BRACKET	1
3	ACP0378370	LH SECONDARY SHELF BRACKET	1
4	ACP0378380	RH SECONDARY SHELF BRACKET	1



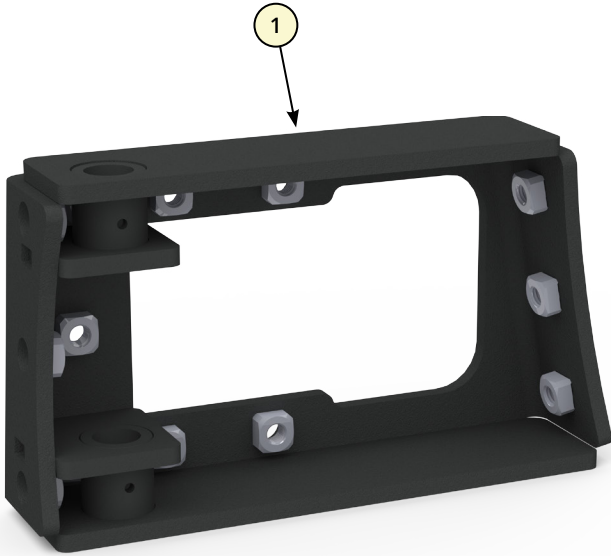


Figure 4.51 - Hinge Box Assy

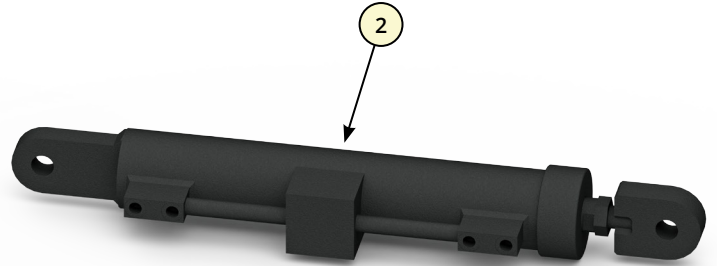


Figure 4.52 - Hydraulic Cylinder

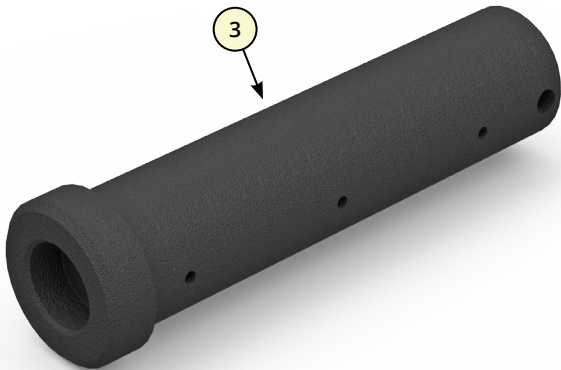


Figure 4.53 - Fold Cylinder Pin

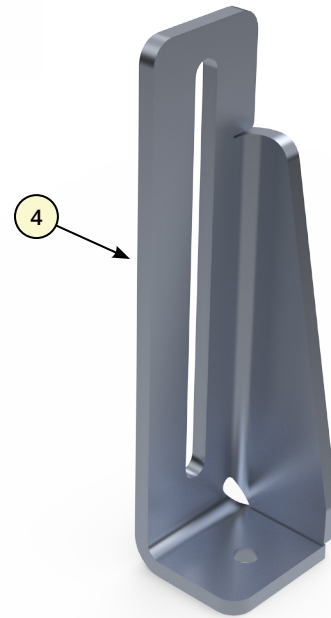


Figure 4.54 - Plumbing Tab

Ref #	Part #	Description	Qty
1	ACP0378390	HINGE BOX ASSY	1
2	ACP0378400	HYDRAULIC CYLINDER	1
3	ACP0378410	FOLD CYLINDER PIN	1
4	ACP0378420	PLUMBING TAB	1

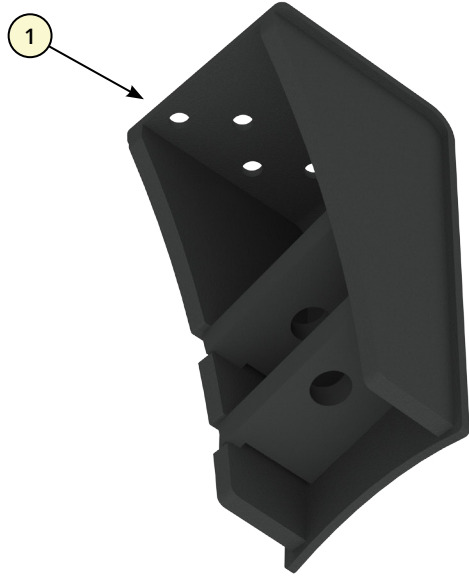


Figure 4.61 - LH Cylinder Anchor Bracket



Figure 4.62 - RH Cylinder Anchor Bracket

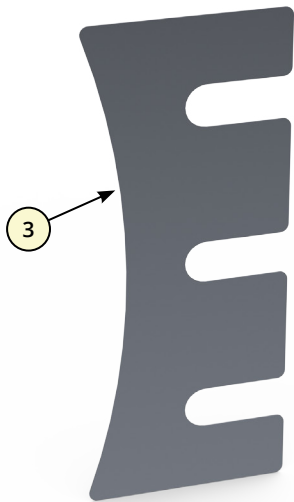


Figure 4.63 - Hinge Shim

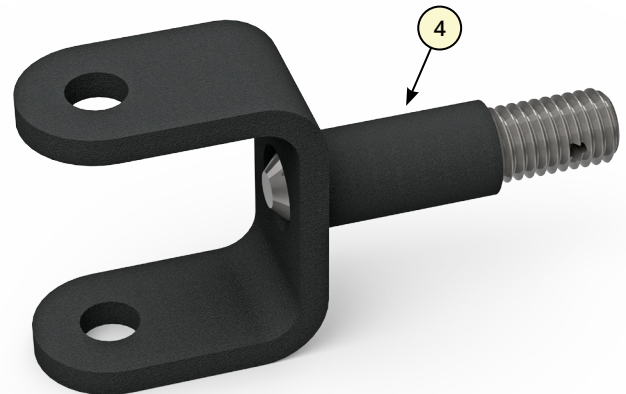


Figure 4.64 - Pivot Fork

Ref #	Part #	Description	Qty
1	ACP0378440	LH CYLINDER ANCHOR BRACKET	1
2	ACP0378480	RH CYLINDER ANCHOR BRACKET	1
3	ACP0378450	HINGE SHIM	1
4	ACP0378500	PIVOT FORK FOR BREAK DAMPER	1

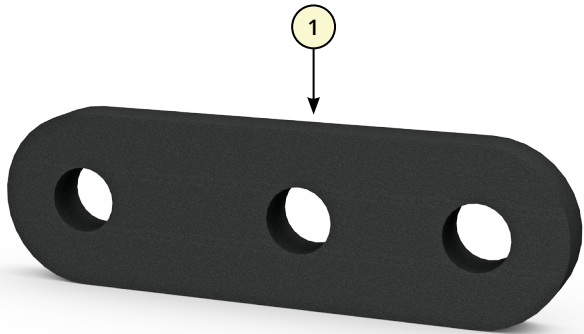


Figure 4.71 - Lift Lug Spacer

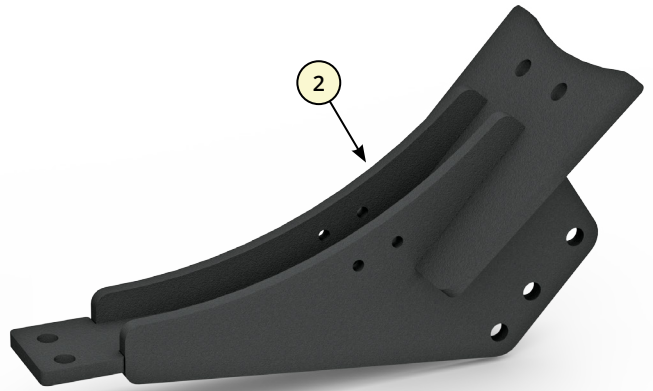


Figure 4.72 - LH Lift Lug Attach Bracket

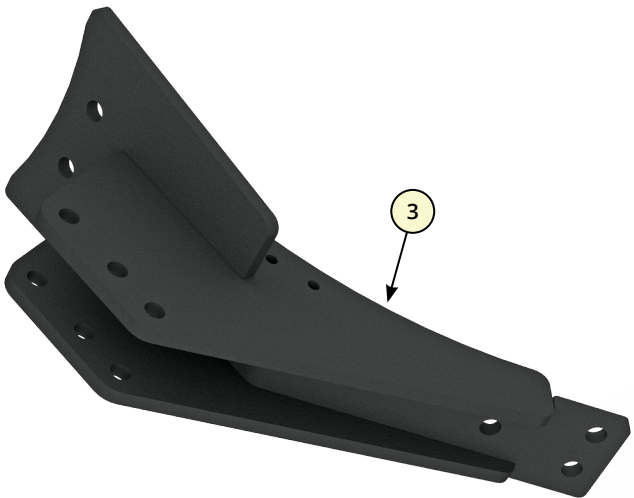


Figure 4.73 - RH Lift Lug Attach Bracket (bottom view)

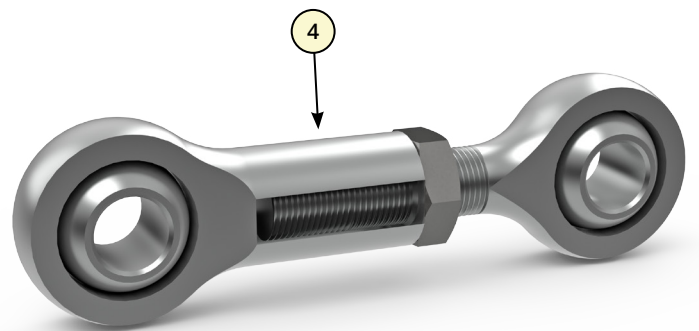


Figure 4.74 - Primary to Secondary Linkage

Ref #	Part #	Description	Qty
1	ACP0378510	LIFT LUG SPACER	1
2	ACP0378520	LH LIFT LUG ATTACH BRACKET	1
3	ACP0378530	RH LIFT LUG ATTACH BRACKET	1
4	ACP0378540	PRIMARY TO SECONDARY LINKAGE	1

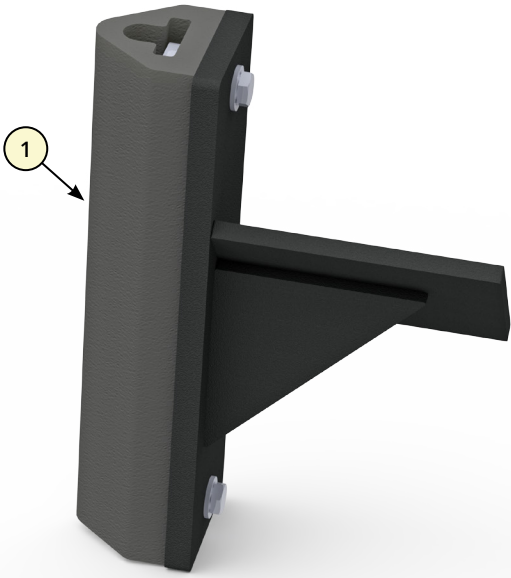


Figure 4.81 - Breakaway Bump Stop

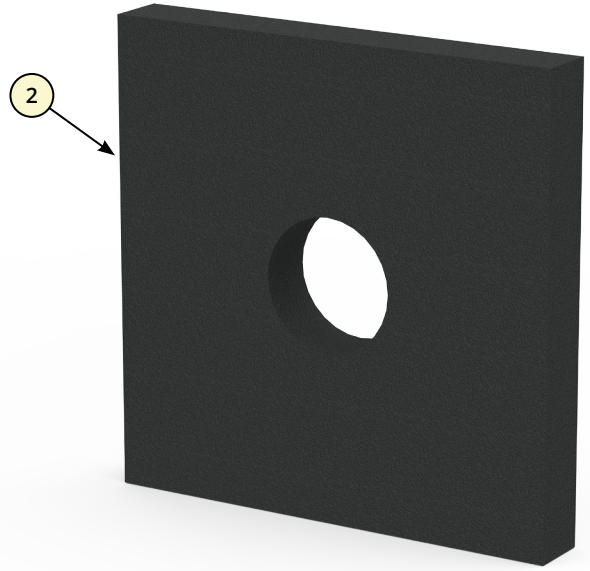


Figure 4.82 - Square Washer

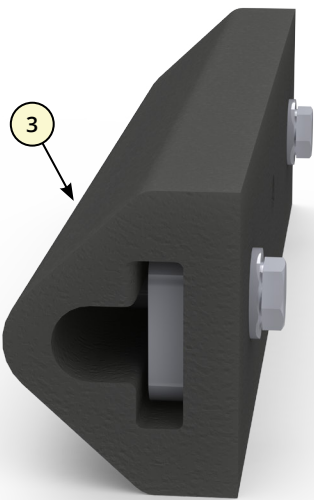


Figure 4.83 - Breakaway Rubber Bumper

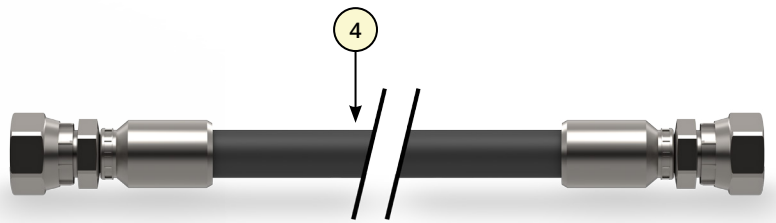


Figure 4.84 - 1/4" Hydraulic Line

Ref #	Part #	Description	Qty
1	ACP0378870	BREAKAWAY BUMP STOP	1
2	ACP0378740	SQUARE WASHER	1
3	ACP0378550	BREAKAWAY RUBBER BUMPER	1
4	ACP0382450	1/4" HYDRAULIC LINE	2

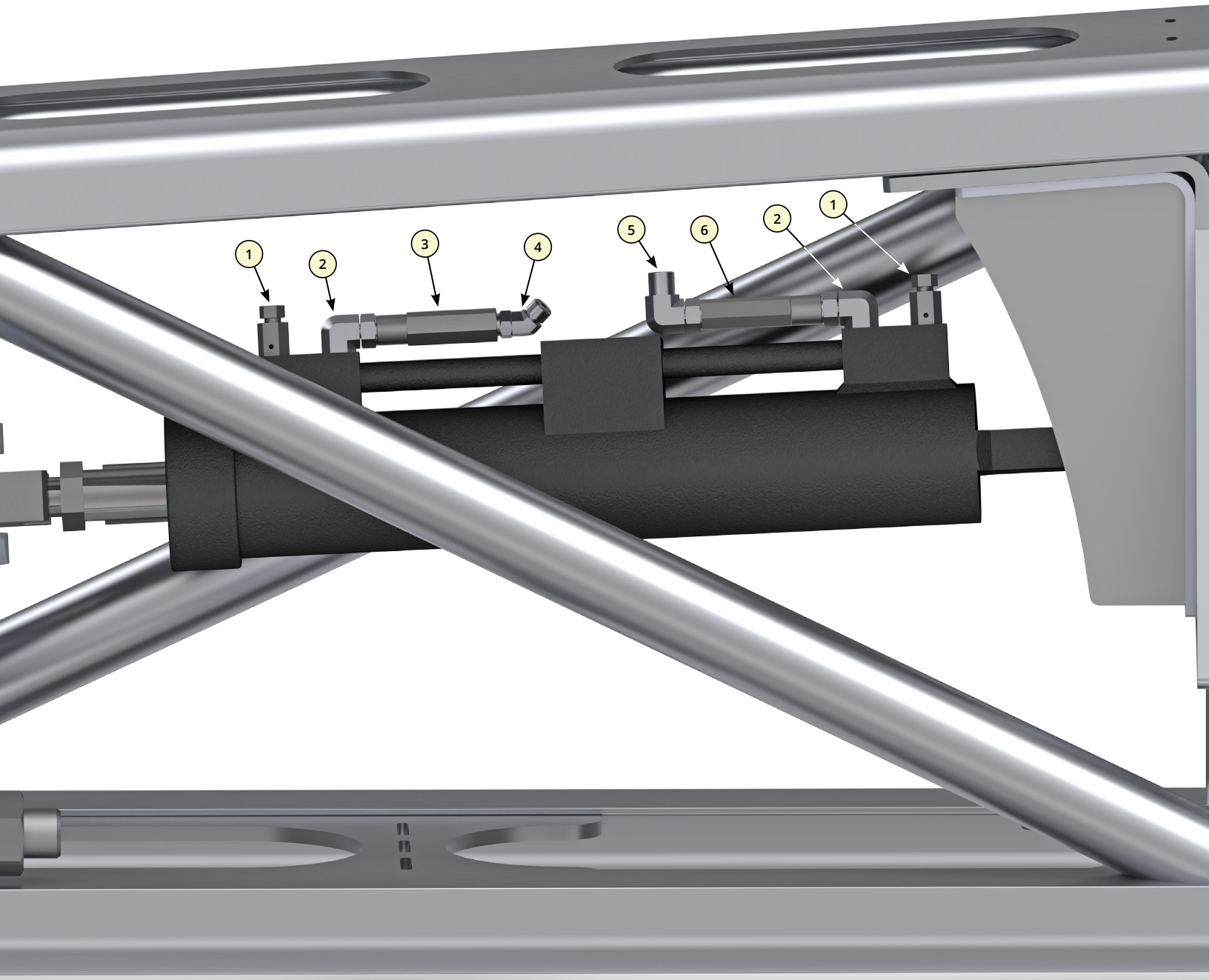


Figure 4.91 - Fold Cylinder Hydraulics

Ref #	Part #	Description	Qty
1	ACP0380910	BLEEDER	2
2	ACP0380920	ELBOW 90 DEGREE	1
3	ACP0380940	.4" FLOW VALVE	1
NOT SHOWN	ACP0382460	.3" FLOW VALVE (132' boom)	1
4	ACP0380930	4365X4X6	2
5	ACP0382470	4515 4X6	1
6	ACP0380380	.75" FLOW VALVE	1